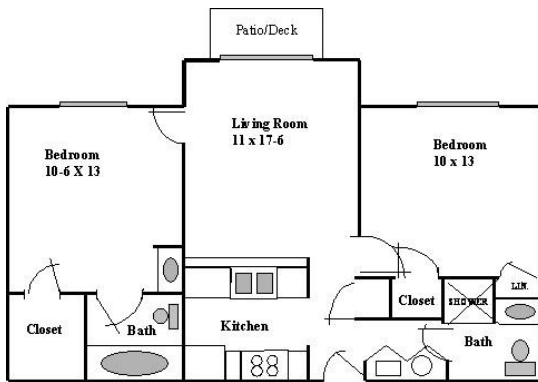




Friends Village Apartments

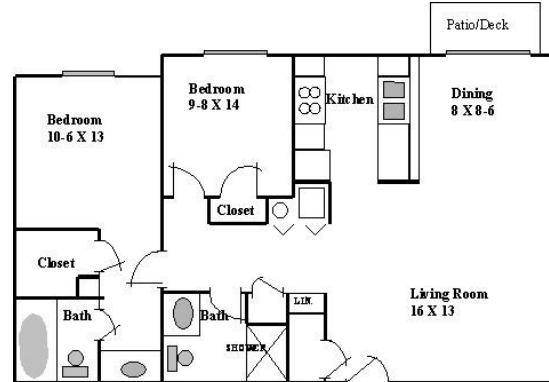


11

Friends Village 2 Bedroom Small—775 sq. ft

<u>Monthly</u>	<u>Semester</u>	<u>Summer</u>
\$770	\$3,465	\$2,310

Deposit—\$100 / person

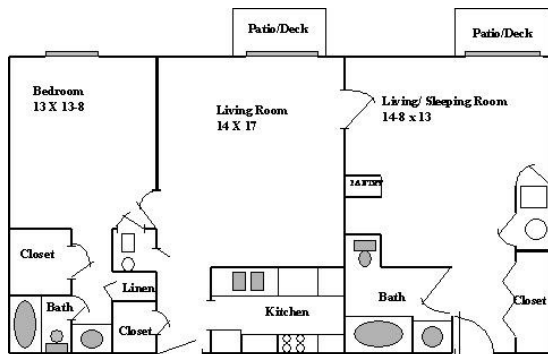


8

Friends Village 2 Bedroom Large—912 sq. ft

<u>Monthly</u>	<u>Semester</u>	<u>Summer</u>
\$830	\$3,735	\$2,490

Deposit—\$100 / person

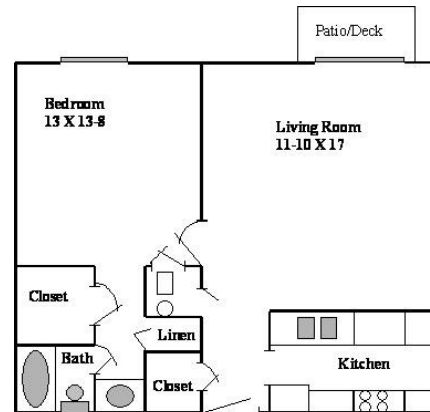


4

Friends Village 2 Bedroom Deluxe—1076 sq. ft

<u>Monthly</u>	<u>Semester</u>	<u>Summer</u>
\$890	\$4,005	\$2,670

Deposit—\$100 / person



11

Friends Village 1 Bedroom Large—676 sq. ft

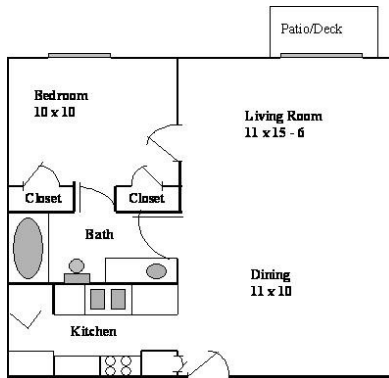
<u>Monthly</u>	<u>Semester</u>	<u>Summer</u>
\$595	\$2,677	\$1,785

Deposit—\$100 / person

*These are all approximate floor plans. Some apartments may vary slightly in size and layout. Please call the Office of Residence Life at 295-5500 for more information.



Friends Village Apartments



10

Friends Village 1 Bedroom Small—575 sq. ft

<u>Monthly</u>	<u>Semester</u>	<u>Summer</u>
\$570	\$2,565	\$1,710
Deposit—\$100 / person		

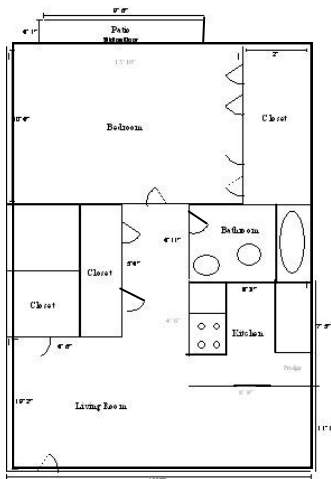


3

Friends Village Studio—400 sq. ft

<u>Monthly</u>	<u>Semester</u>	<u>Summer</u>
\$485	\$2,182.50	\$1,455
Deposit—\$100 / person		

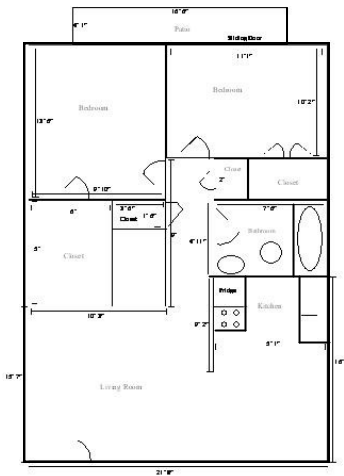
Falcon Flats Apartments



8

Falcon Flats 1 Bedroom—670 sq. ft

<u>Monthly</u>	<u>Semester</u>	<u>Summer</u>
\$550	\$2,475	\$1,650
Deposit—\$100 / person		



4

Falcon Flats 2 Bedroom—750 sq. ft

<u>Monthly</u>	<u>Semester</u>	<u>Summer</u>
\$725	\$3,262.50	\$2,175.00
Deposit—\$100 / person		