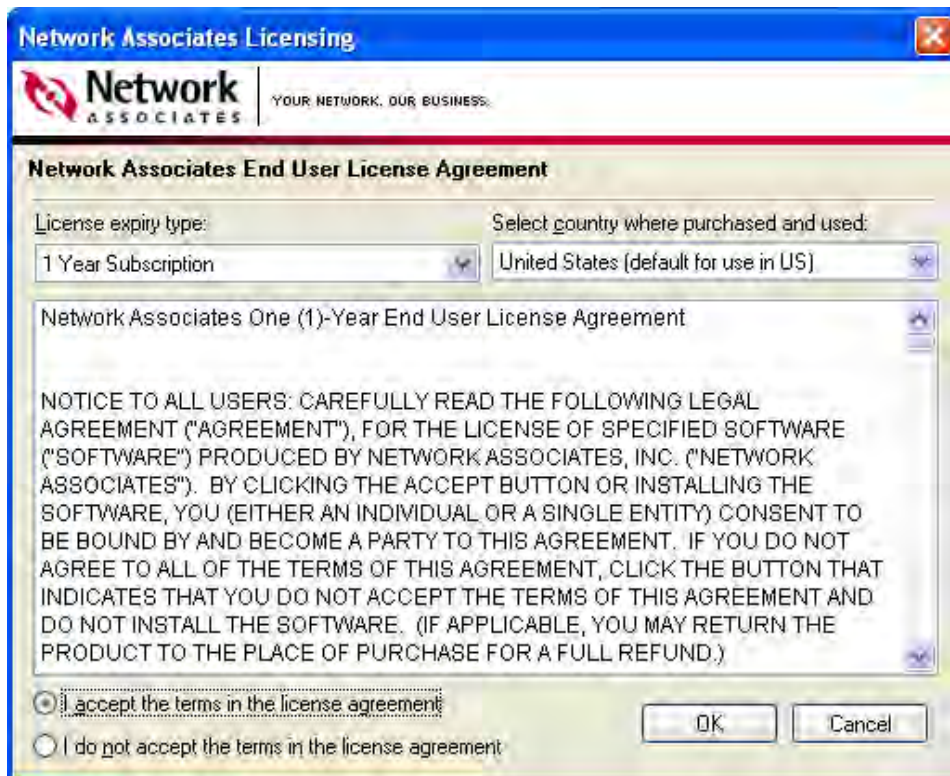


# Installing McAfee Antivirus

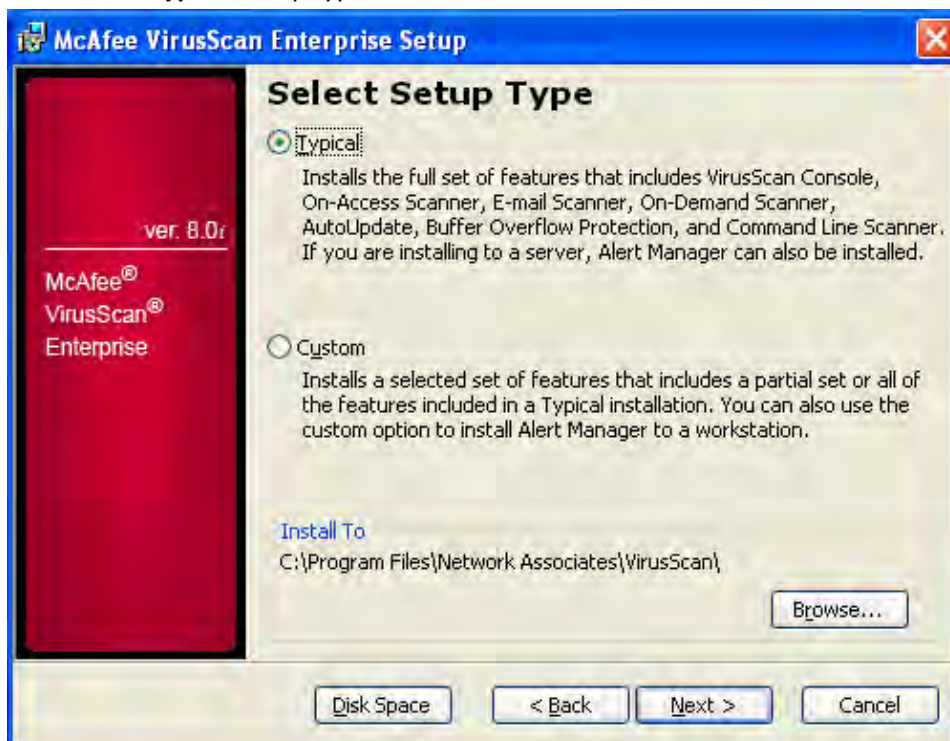
1. Go to [www.friends.edu](http://www.friends.edu) and click on the **FAB logo** at the bottom right side of the page.
2. Click on Antivirus link.
3. Enter your **network username and password**, when prompted.
4. Once the file is downloaded you will need to **unzip the file and save it** on your computer.
5. Within the **VSE80iLEN** folder, double-click on the **Setupvse.exe** file.
6. Click **Next** to start the setup and installation.



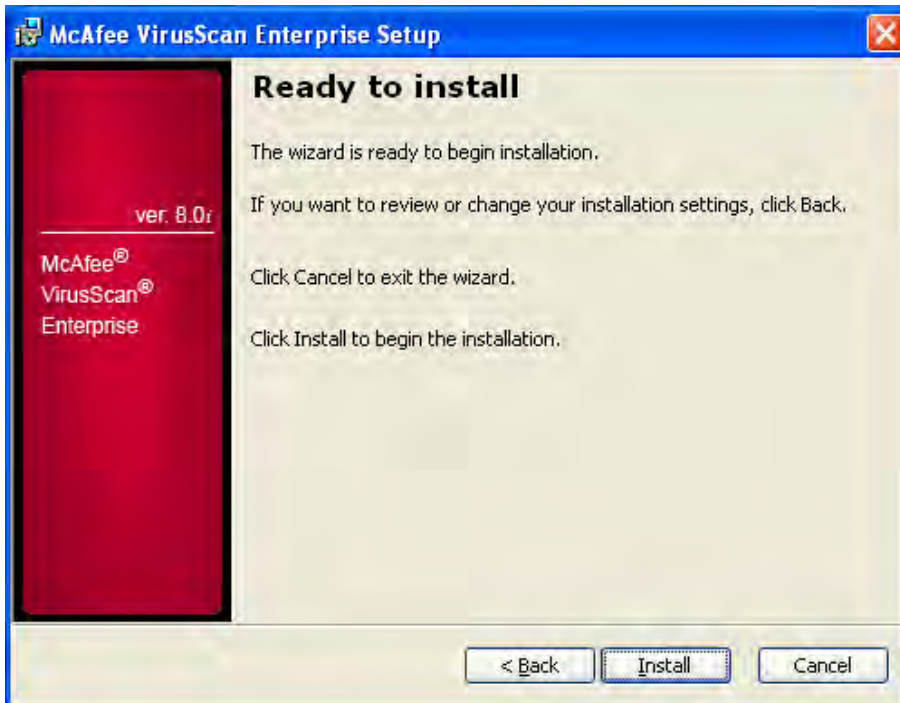
7. Click **I accept the terms in the license agreement**. Then click **Ok**.



8. Choose the **Typical** setup type. Then click **next**.



9. Click **Install**.



10. Let the installer run, this could take a few minutes.

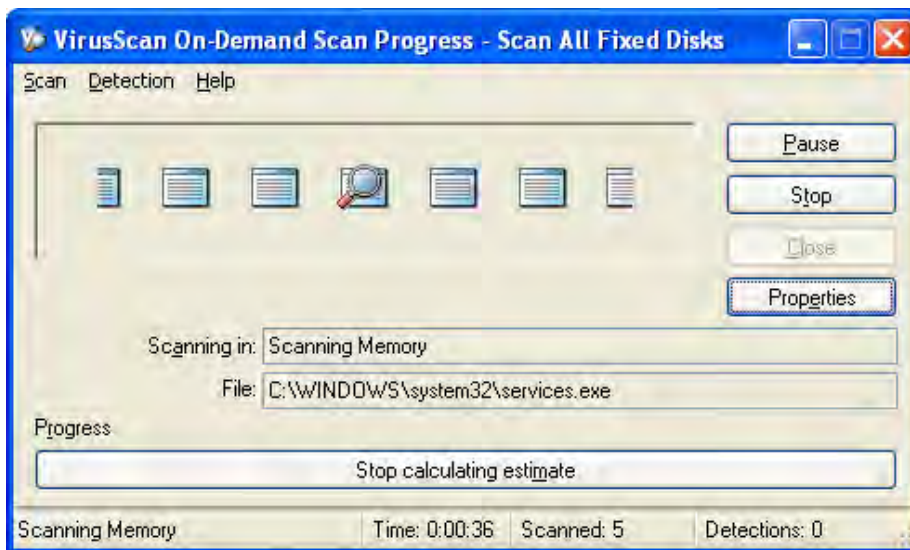




11. Click **Finish**.




If you checked Run On-Demand Scan the below scan window will automatically load and start scanning your computer.

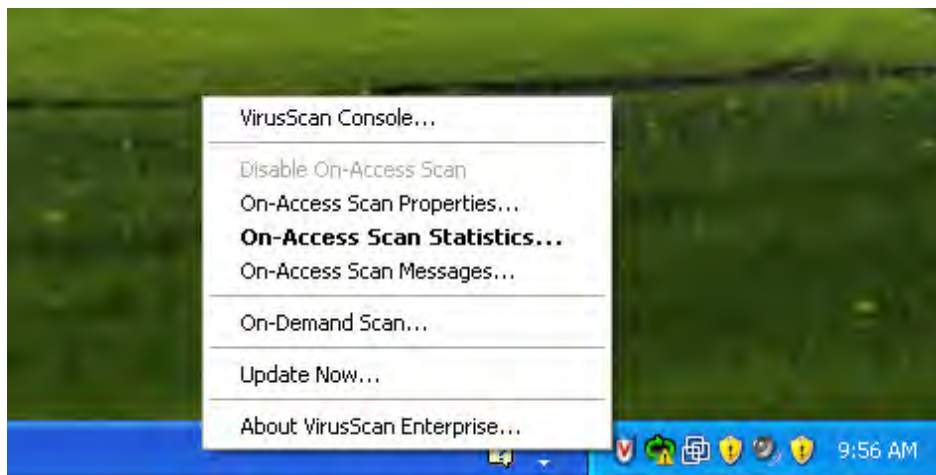


If you checked Update Now the below message will pop-up. You will need to restart your computer before you can continue to use McAfee.



12. After McAfee is installed you can access the menu options from the taskbar by right-click on the

McAfee icon. 



For additional assistance contact the Friends University Helpdesk.

Phone: 1-800-794-6945 x5767

Email: [helpdesk@friends.edu](mailto:helpdesk@friends.edu)